



ARCHITECTS  
INC

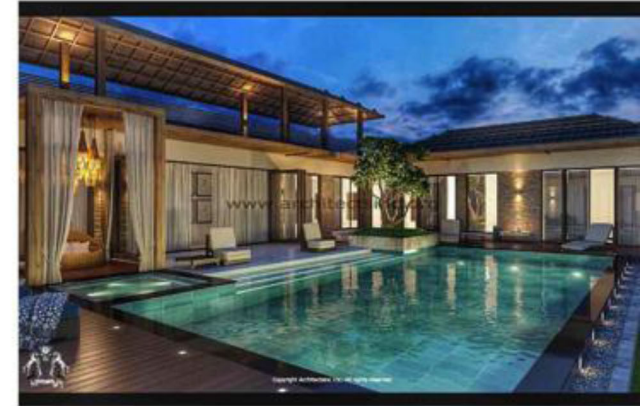
architects inc

[www.architectsinc.org](http://www.architectsinc.org) | [www.facebook.com/architectsinc](https://www.facebook.com/architectsinc) | [www.instagram.com/architectsinc](https://www.instagram.com/architectsinc)



## ■ Who we Are:

ARCHITECTS INC is a brain child of two young and ambitious graduates of National College of Arts. Ifran Naveed, Saad Kureshi form the main team of the company, and provide the impetus to the style of architecture and interiors





## ■ What we do:

We offer comprehensive professional services, but also something more

Because we represent a wide variety of professional perspectives and experiences, and because we routinely consult with one another, we can handle complex challenges more readily than other firms. We deliver unexpected insights, solve unforeseen problems, and often create work that achieves even more than our clients imagined. Our team consists of specialist:

- Architects
- Interiors Designers
- Landscape Designers
- Project Management
- Renovation





*o Combine New and old*  
*o Bent the rules*  
*o Mind the Enviornmet*  
*o Functionality*

## ■ Philosophy:

Buildings should serve a higher purpose. At Architects Inc. we believe great architecture shapes the human experience, improves the quality of the built environment and helps conserve the earth's resources. Our goal always is to cut through the complexity to make life easier and better for people. Truly creative designs go far beyond the look and feel, and are based on a complex set of criteria. The environments that Architects Inc. aims to create reflect present and future times, people's imaginations, priorities, needs, culture and tastes. They feel modern and fresh, and yet are sympathetic to their surroundings. What we create today will have a profound affect on the emotions of people who will use them tomorrow.

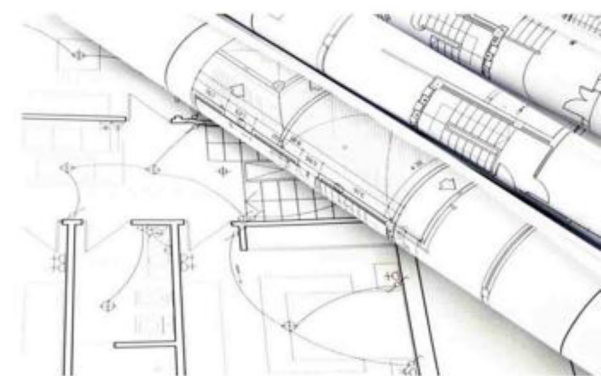




## ■ Architecture: Design and Documentation Services :

Design and Documentation Services; consists of further design development drawings and Construction Documents culminating in the following (as applicable to the project):

- Architectural Drawings:
- Architectural Cover Sheet (Project Data, Maps, Notes, etc.)
- Architectural Site Plan and Details
- Architectural Floor Plan (Dimensioned with notes, wall types, key notes, etc.)
- Door Types, Door & Hardware Schedules, Interior Door and Window Details, etc.
- Exterior Door and Window Details
- Roof Plan and Details
- Building Sections
- Walls Sections
- Building Elevations
- Material and Fabrication Drawings/Specifications Book- Exterior
- Architecture 3D Max Images of the Bulding







## ■ Interior: Design and Documentation Services :

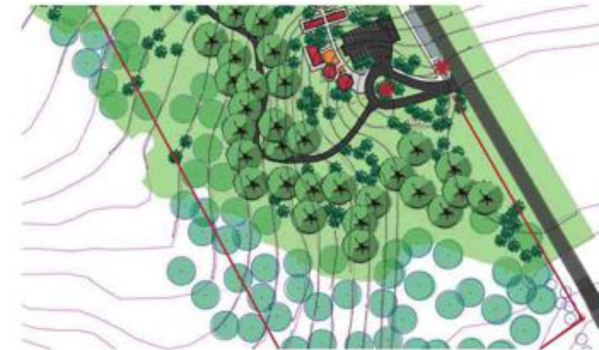


- Analyzing the client's needs and goals.  
Integrating findings with knowledge of interior design, economic trends as well as legal and regulatory requirements.
- Formulating design concepts that are functional, fiscally appropriate and aesthetically pleasing.
- Overseeing the interior design process including project budgeting and schedules.
- Preparing working drawings and specifications for interior construction, space planning, materials, finishes, furnishings, fixtures and equipment.
- Collaborating with other practitioners who offer professional services in the technical areas of mechanical, electrical and structural design, as required for regulatory approvals (building permits).
- Reviewing and evaluating construction during implementation and coordinating the completion of the project with a consultant team.
- Exterior 3D Max Images of the Building



## ■ Landscape: Design and Documentation Services :

- Prepares the general ground modeling plan and planting layout.
- Prepares drawings and specifications of utilities (such as irrigation, drainage, lighting, etc.)
- Prepares schedule of shrubs, trees, and other plants.
- Prepares details of landscaping elements. Hard Landscape (Mainly)
- Assists the client in conducting bids or negotiations with landscape contractors
- Checks and approves samples of materials.
- Conducts final inspection and approval of landscaping works.
- Assists the client to evaluate the amount due to the contractor.
- Landscape 3D Max Images of the Building







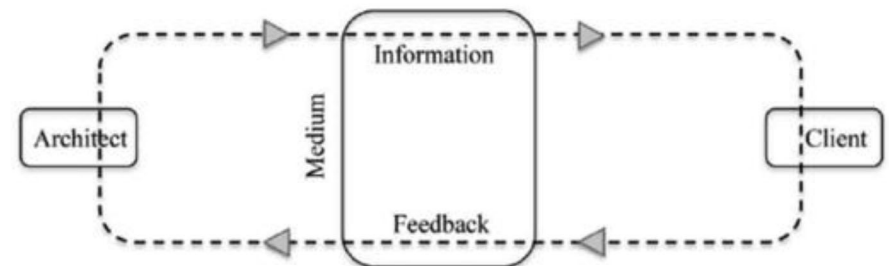
# Mall of Arabia





## ■ Design Process :

1. Consult with client regarding project needs/goals.
2. Review information about space or site to assess it's acceptability.
3. Ascertain any special issues that might affect development (zoning, environmental, grading/detention/water quality), soil characteristics (general), views, etc.) The site related issues are often done in conjunction with a local Civil Engineer familiar with developing projects in the area. May need Topographic and Tree Survey to adequately analyze the site.
4. Build a relationship of trust and knowledge with the client.
5. Develop the scope of work to be performed.
6. Produce preliminary/schematic drawings that may include Preliminary Site Plan (if new building) and Preliminary Floor Plan.



# MIX OLD STYLES



ARCHITECTS  
INC



# Design 3 Stages:

## **STAGE I - INCEPTION**

*Receive, appraise and report on the client's requirements with regard to:*

- The client's brief
- The site and rights and constraints
- Budgetary constraints
- The need for consultants
- Project program
- Methods of contracting

## **STAGE II - CONCEPT & VIABILITY (concept design)**

- The intended space provisions and planning relationships
- Proposed materials and intended building services
- The technical and functional characteristics of the design
- Conformity of the concept with the rights to the use of the land
- The anticipated costs of the project as well as project program

## **STAGE III - DESIGN DEVELOPMENT**

*This phase involves the development of the concept design prepared in Stage II in sufficient detail in order to:*

- Confirm the scope and complexity
- Review the design and consult with local and statutory authorities
- Develop the design, construction system, materials and components
- Incorporate and co-ordinate all services and the work of consultants
- Review the design, costing and program with the consultants





## Modern Elements







## ■ Office Addresses:

### Lahore:

26A, Street 4, KB Colony,  
New Airport Road, Lahore- CANTT- Pakistan.  
T: 0092 42 35701177

### Islamabad:

Appartment 202, Park avenue  
F11/1- Islamabad: Pakistan  
T: 0092 51 2100999

**Email:** executive.architectsinc@gmail.com

## ■ Webpages:

**Webpage:** [www.architectsinc.org](http://www.architectsinc.org)

**Facebook:** [www.facebook.com/architectsinc](http://www.facebook.com/architectsinc)

**Instagram:** [www.instagram.com/architectsinc](http://www.instagram.com/architectsinc)

## ■ Affiliations:

Pakistan Council of Architects and Town Planners

Institute of architects Pakistan IAP

Pakistan Institute of Interior Designers PIID

DHA lahore Approved architects

CDA Islamabad approved Architects